



GMT MONTHLY MEMBERSHIP PROGRESS REPORT

Results as of: 5/31/2020

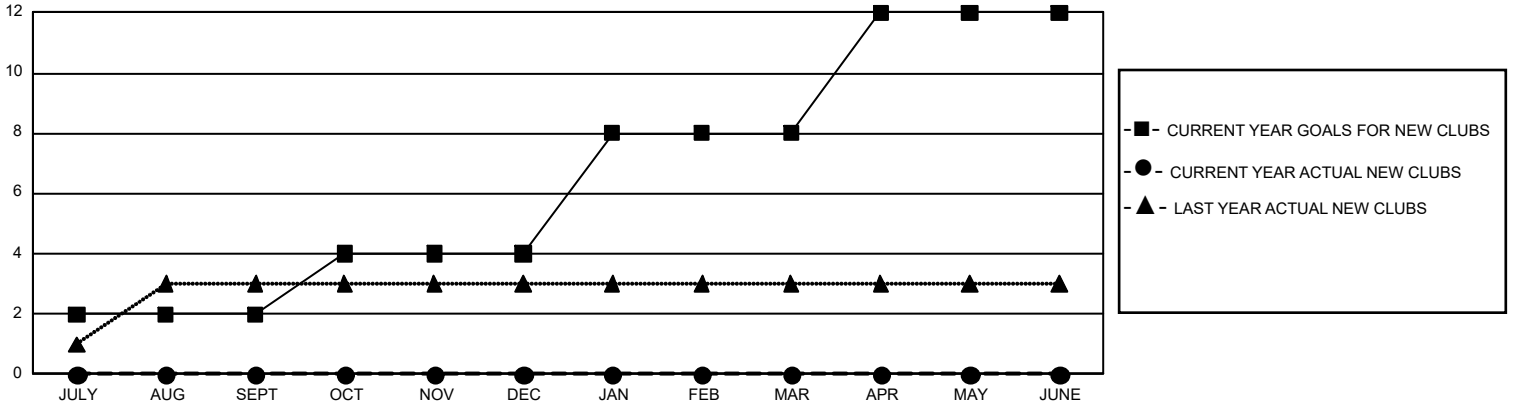
GMT Constitutional Area 5 - C, Group D

GMT: OPEN

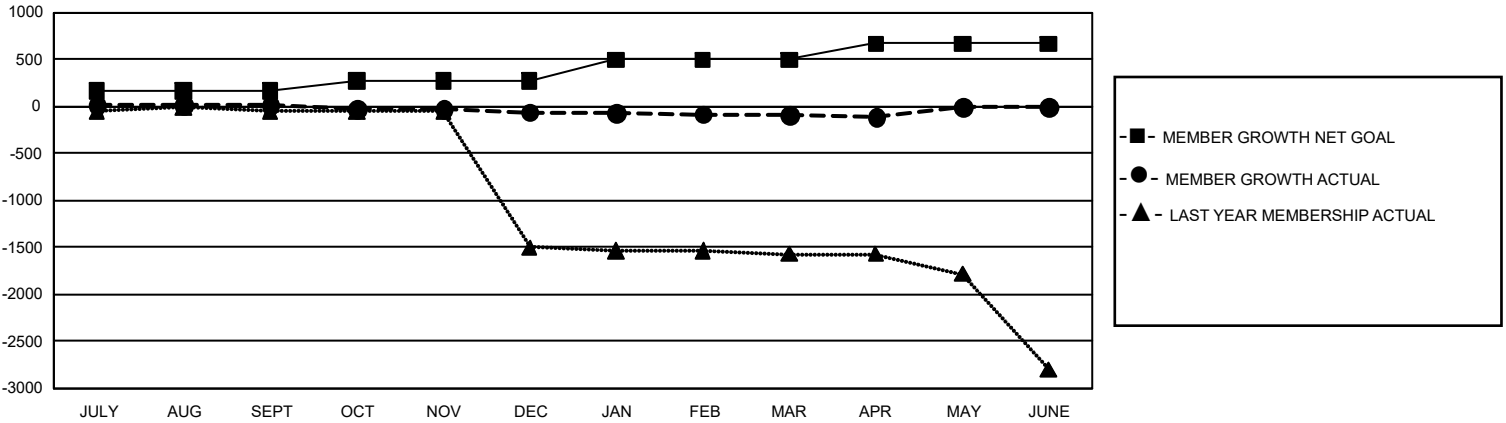
REPORT DOES NOT INCLUDE CLUBS IN UNDISTRICTED AREAS.

Clubs				Members			
RESULTS FOR 2019-2020				RESULTS FOR 2019-2020			
QUARTER	NEW CLUB GOAL	NEW CLUBS	DROPPED CLUBS	QUARTER	MEMBER GROWTH NET GOAL	MEMBER GROWTH ACTUAL	DROPPED MEMBERS ACTUAL (including transfers)
JULY/AUG/SEPT	6	0	4	JULY/AUG/SEPT	495	92	38
OCT/NOV/DEC	6	0	0	OCT/NOV/DEC	330	66	97
JAN/FEB/MAR	12	0	0	JAN/FEB/MAR	675	47	40
APR/MAY/JUNE	12	0	0	APR/MAY/JUNE	525	62	41

GOALS AND ACTUAL NEW CLUBS CUMULATIVE



GOALS AND ACTUAL MEMBERS CUMULATIVE



DROPPED CLUBS: 4	50 CLUBS OF 406 ADDED 1 OR MORE NEW MEMBERS	<u>GENDER DISTRIBUTION</u>	
<u>DROPPED MEMBERS</u>		MALE	8,625 (64.95%)
DECEASED	1	FEMALE	4,654 (35.05%)
CLUB CANCELLED	0	TOTAL FAMILY UNIT MEMBERS	869
OTHER	215	FAMILY MEMBERS PAYING HALF DUES	447
TOTAL	216		

[CLICK HERE FOR CUMULATIVE MEMBERSHIP DATA](#)